

HOPE HELP HEALING

The Jean Tweed Centre

welcomes all women.

We recognize and value the rich diversity of Canadian society and specifically the women, children and families it serves from various communities.



If you wish to donate to the Education Fund or other programs and services available at the Jean Tweed Centre, please call 416-255-7359, Ext 245 or donate online at jeantweed.com.



The Jean Tweed Centre

215 Evans Avenue
Etobicoke, Ontario
M8Z 1J5

Telephone: 416-255-7359
Fax: 416-255-9021
jeantweed.com

Charitable Registration No. 118973528RR0001

THE JOYCE SHIPLEY EDUCATION FUND FOR WOMEN

*IN MEMORY OF
MARYJANE SCHMITZ*



"They never gave up on me, and they never let me give up on myself."

- Jean Tweed Client -

The Jean Tweed Centre



For Women & Their Families

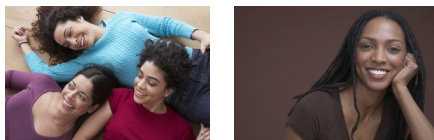
THE JOYCE SHIPLEY
EDUCATION FUND FOR WOMEN

*IN MEMORY OF MARYJANE
SCHMITZ*

The Jean Tweed Centre was established in 1983, and has evolved and grown to become a leading community-based substance abuse and problem gambling agency for women in Ontario.

The Centre offers a wide range of services including residential and day programming, out-patient programs including continuing care, family and trauma counselling, and an outreach service to women who have mental health and substance use problems as well as involvement in the criminal justice system.

The Centre offers programs for mothers with young children and outreach services in various locations across the city for pregnant and parenting women. An on-site fully licensed therapeutic Child Development Centre and child care services are available to women enrolled in our programs.



Women who have completed programming at the Jean Tweed Centre, are offered 2 years of Continuing Care to help maintain and build on changes made. Women who take advantage of this service are much better equipped to meet their personal use goals and less likely to experience serious setbacks.

Maryjane Schmitz

Maryjane, a former counselor at the Jean Tweed Centre, and a treasured staff member was convinced of the power in each woman to make changes in her life. She helped women to know their strengths and believe in their goals. Maryjane's commitment is exemplified in her desire to continue to support women through the establishment of an Education Fund in her mother's name, Joyce Shipley.



Maryjane Schmitz

Joyce Shipley

Joyce Marion Shipley's family history of substance abuse and sorrow contributed to her own personal battle with substance abuse. She strived to teach her daughters to assist other women to increase their self esteem and to support those who are struggling with substance abuse.

Our mission is to provide counseling and care to assist each woman to restore herself to a meaningful life within her community.

The Joyce Shipley Education Fund for Women supports the mission of the Jean Tweed Centre and was established to assist women to further their education.



Eligibility Criteria

Funds will be awarded for post-secondary education costs, including tuition and/or books.

Awards will be distributed twice per year.

Successful applicants may receive up to \$500 each year.

To obtain a copy of an application, please call 416-255-7359, Ext 245 or email nancybradley@jeantweed.com.

Applications are due by May 31 and September 30. Funding awards are granted August 1 and December 1.